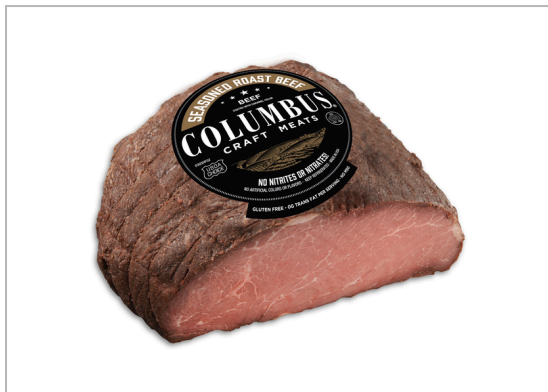


12185 - Roast Beef

COLUMBUS Seasoned Roast Beef is delightfully created by lightly seasoning hand-trimmed top round cuts of beef, and then slow-roasted in its own juices. COLUMBUS Roast Beef has a mouth-watering taste that honors the real flavor of beef. No artificial flavors and colors.



MARKETING

COLUMBUS Seasoned Roast Beef is delightfully created by lightly seasoning hand-trimmed top round cuts of beef, and then slow-roasted in its own juices. COLUMBUS Roast Beef has a mouth-watering taste that honors the real flavor of beef. No artificial flavors and colors.

Nutrition Facts

64 Servings per container

Serving Size 2.0 OZ

Amount Per Serving
Calories 80

% Daily Value*

Total Fat 4 g 6%

Saturated Fat 1 g 5%

Trans Fat 0 g

Cholesterol 35 mg 12%

Sodium 240 mg 10%

Total Carbohydrates 1 g 0%

Dietary Fiber 0 g 0%

Total Sugars 1 g

Includes 0 g Added Sugars 0%

Protein 13 g

Vitamin D 0 mcg 0%

Calcium 0 mg 2%

Iron 0 mg 6%

Potassium 0 mg 0%

* The % Daily Values (DV) tells you how much a nutrient in a serving of food contributes to a daily diet. 2,000 calories a day is used for general nutrition advice.

PRODUCT SPECIFICATIONS

| Code | GTIN | Pack Description | | | | |
|-------------------------|------------------|---------------------------------|---|------------|-----------------|----------------------|
| 83567 | 00073007005569 | 2/8 LB | | | | |
| Brand | Brand Owner | GPC Description | | | | |
| Columbus | Columbus Mfg Inc | Beef - Unprepared/Unprocessed | | | | |
| Gross Weight | Net Weight | Case/Catch Weight | Country Of Origin | Kosher | Child Nutrition | |
| 19.8 LBR | 16 LBR | Yes | United States | Undeclared | No | |
| Shipping | | | | | | |
| Length | Width | Height | Volume | TlxHI | Shelf Life | Storage Temp From/To |
| 9.1 INH | 5.6 INH | 2.9 INH | 0.09 FTQ | 11x06 | 90 Days | -5 FAH / -2.5 FAH |
| Traceability Regulation | | | | | | |
| Regulation Type Code | Regulatory Act | Trade Item Regulation Compliant | Regulation Restrictions and Descriptors | | | |
| N/A | N/A | N/A | N/A | | | |

HANDLING SUGGESTIONS

Keep Refrigerated---UNIT UPC: 073007005569---

ALLERGENS

C = 'Contains'; MC = 'May Contain'; N = 'Free From'; UN = 'Undeclared'; INI = 'Intentionally nor Inherently Included'; SO = 'Derived from Ingredients'; 60 = 'Not Derived From Ingredients'; NI = 'No Info'

- Milk - N
- Eggs - N
- Soybean - N
- Wheat - N
- Sesame - N
- Molluscs - N
- Peanuts - N
- Tree - N
- Fish - N
- Shellfish - N
- Crustaceans - N

INGREDIENTS

N/A

12185 - Roast Beef

COLUMBUS Seasoned Roast Beef is delightfully created by lightly seasoning hand-trimmed top round cuts of beef, and then slow-roasted in its own juices. COLUMBUS Roast Beef has a mouth-watering taste that honors the real flavor of beef. No artificial flavors and colors.



PREPARATION & COOKING SUGGESTIONS

Perfect for making chipotle roast beef sandwiches on a hoagie roll, garlic roast beef pinwheels, or creating a the perfect slider.

SERVING SUGGESTIONS

Perfect as an ingredient in sandwiches and snack cups that will surely not disappoint.

MORE INFORMATION