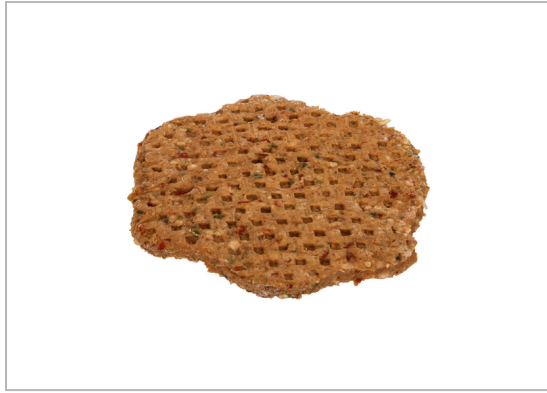


- Beef Pattie Pepper Steak 4-1 HS LP 10#

Traditional Comforts™ beef pepper steak will add some PEP to any menu. Made with red and green peppers and a delicious blend of seasoning, this patty has just enough mild heat to bring unique flavors to classic dishes. These patties are individually quick frozen and consistently portioned to provide operators with the labor savings back of the house ease.



MARKETING



Nutrition Facts

1 Servings per container	
Serving Size	100g
Amount Per Serving	
Calories	241
% Daily Value*	
Total Fat 19.4	29.846%
Saturated Fat 8.9 g	44.5%
Trans Fat 1.2 g	
Cholesterol 46.4 mg	15.467%
Sodium 208.1 mg	8.671%
Total Carbohydrates 1.8 g	0.6%
Dietary Fiber 1.7 g	6.8%
Total Sugars 0 g	
Includes 0 g Added Sugars	0%
Protein 15.1 g	
Vitamin D 0 mcg	0%
Calcium 17.8 mg	1.78%
Iron 1.6 mg	8.889%
Potassium 270 mg	7.714%

* The % Daily Values (DV) tells you how much a nutrient in a serving of food contributes to a daily diet. 2,000 calories a day is used for general nutrition advice.

PRODUCT SPECIFICATIONS



Code	Dist Prod Code	GTIN	Calculated Pack			
17020		00079821170209	40 x 1 x (4 ONZ to 4 ONZ)			
Brand	Brand Owner	GPC Description				
Holten	HOLTEN	Beef - Unprepared/Unprocessed				
Gross Weight	Net Weight	Case/Catch Weight	Country Of Origin	Kosher	Child Nutrition	
10.77 LBR	10 LBR	No	United States	Undeclared	No	
Shipping						
Length	Width	Height	Volume	TlxHI	Shelf Life	Storage Temp From/To
16 INH	11 INH	4.54 INH	0.46 FTQ	10x12	240 Days	-10 FAH / 10 FAH
Traceability Regulation						
Regulation Type Code	Regulatory Act	Trade Item Regulation Compliant	Regulation Restrictions and Descriptors			
BUY_AMERICAN_PROVISION_USDA	N/A	NOT_APPLICABLE	NOT_COVERED_BY_FTL			

HANDLING SUGGESTIONS



Product should be stored between -10 and 10 degrees F

ALLERGENS



C = 'Contains'; **MC** = 'May Contain'; **N** = 'Free From'; **UN** = 'Undeclared'; **NI** = 'Intentionally nor Inherently Included'; **50** = 'Derived from Ingredients'; **60** = 'Not Derived From Ingredients'; **NI** = 'No Info'

- Milk - N
- Eggs - N
- Soybean - C
- Wheat - N
- Sesame - N
- AU - N
- Molluscs - N
- Peanuts - N
- Tree - N
- Fish - N
- Shellfish - N
- Crustaceans - N
- Mustard - N

INGREDIENTS



Ingredients: Beef, water, textured vegetable protein (soy flour), seasoning: (salt, red and green bell pepper, spices, sugar, dehydrated onion, disodium inosinate and disodium guanylate, soybean oil, autolyzed yeast extract, natural flavors, turmeric), red peppers and green bell peppers.

- Beef Pattie Pepper Steak 4-1 HS LP 10#

Traditional Comforts™ beef pepper steak will add some PEP to any menu. Made with red and green peppers and a delicious blend of seasoning, this patty has just enough mild heat to bring unique flavors to classic dishes. These patties are individually quick frozen and consistently portioned to provide operators with the labor savings back of the house ease.

PREPARATION & COOKING SUGGESTIONS

Cook patties from frozen state for best results. Grill: Place on a preheated (350 F) grill and cook until juices begin to pool. Turn patty and continue cooking until juices run clear. Always cook ground beef products to an internal temperature of 160 F.

SERVING SUGGESTIONS

As a hamburger sandwich with coleslaw, french fries, and a pickle. On a slice of bread with gravy for a unique open-face sandwich. With rice and salad or fruit for a light plate luncheon. With noodles and gravy for a buffet entrée. With brown gravy, mashed potatoes, green beans, and a dinner roll for a hearty supper. With salad, vegetables, and a dinner roll for a lighter entrée. In a spicy sauce with bell peppers for a gourmet entrée.

MORE INFORMATION

NUTRITIONAL ANALYSIS

Calories	241
Protein	15.1 g
Total Carbohydrates	1.8 g
Sugars	0 g
Dietary Fiber	1.7 g
Lactose	
Sucrose	
Vitamin A (IU)	14
Vitamin A (RE)	14
Vitamin C	0 mg
Magnesium	
Monosodium	

Total Fat	19.4
Trans Fat	1.2 g
Saturated Fat	8.9 g
Added Sugars	0 g
Polyunsaturated Fat	
Monounsaturated Fat	
Cholesterol	46.4 mg
Vitamin D	0 mcg
Vitamin E	
Folate	
Vitamin B-6	
Sulphites	

Sodium	208.1 mg
Calcium	17.8 mg
Iron	1.6 mg
Potassium	270 mg
Zinc	
Phosphorus	
Thiamin	
Niacin	
Riboflavin	
Vitamin B-12	
Nitrates	

NUTRITIONAL CLAIMS

CORN	CONTAINS	TRANS_FAT	FREE_FROM	PALM_OIL	FREE_FROM
HIGH_FRUCTOSE_CORN_SYRUP	FREE_FROM	MSG	NO_ADDED		

MORE IMAGES

