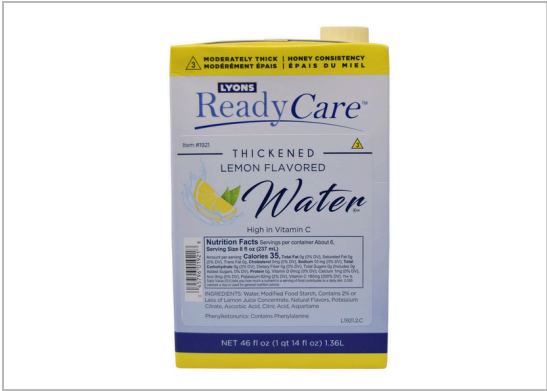


322171 - RC LEMON FLAVORED THICKENED WATER - HONEY

Pre-thickened beverage for patients with dysphagia (swallowing disorders). Ready to serve right from the carton. Packed in 46 ounce resealable aseptic carton. Formulated with aspartame to assist with calorie, carbohydrate and sugar consumption.



MARKETING



Nutrition Facts

82 Servings per container	
Serving Size	100 GR
Amount Per Serving	
Calories	18.3
% Daily Value*	
Total Fat 0 g	0%
Saturated Fat 0 g	0%
Trans Fat 0 g	
Cholesterol 0 mg	0%
Sodium 8.8 mg	0.36%
Total Carbohydrates 3.9 g	1.3%
Dietary Fiber 0 g	0%
Total Sugars 0 g	
Includes Added Sugars	%
Protein 0 g	
Vitamin D 0 mcg	0%
Calcium 0.728 mg	0%
Iron 0 mg	0%
Potassium 26.401 mg	%

* The % Daily Values (DV) tells you how much a nutrient in a serving of food contributes to a daily diet. 2,000 calories a day is used for general nutrition advice.

PRODUCT SPECIFICATIONS



Code	Dist Prod Code	GTIN	Calculated Pack
1921	322171	10045796019215	6/46 oz

Brand	Brand Owner	GPC Description
ReadyCare	Lyons Magnus	Health Enhancement Variety Packs

Gross Weight	Net Weight	Case/Catch Weight	Country Of Origin	Kosher	Child Nutrition
20 LBR	18 LBR	No	United States	Yes	No

Shipping						
Length	Width	Height	Volume	TlxHl	Shelf Life	Storage Temp From/To
9.51 INH	9.51 INH	8 INH	0.419 FTQ	20x6	210 Days	45 FAH / 80 FAH

ALLERGENS



C = 'Contains'; MC = 'May Contain'; N = 'Free From'; UN = 'Undeclared'; 30 = 'Free From Not Tested'; 50 = 'Derived from Ingredients'; 60 = 'Not Derived From Ingredients'; NI = 'No Info'

- Milk - N
- Peanuts - N
- Eggs - N
- Tree Nuts - N
- Soy - N
- Fish - N
- Wheat - N
- Shellfish - NI
- Sesame - N

SERVING SUGGESTIONS



Serve to patients with dysphagia at breakfast time or with any meal or snack. Can be safely set out at ambient temperatures for up to 8 hours.

INGREDIENTS



Water, modified food starch, natural flavors, concentrated lemon juice, ascorbic acid, citric acid, aspartame, and potassium citrate

HANDLING SUGGESTIONS



Packed in 6/46 oz. Twist 'n Pour aseptic cartons. Shelf-stable prior to opening. Once opened, can be stored at ambient temperatures for up to 8 hours or under refrigeration for 5 days.

PREPARATION & COOKING SUGGESTIONS



Ready-to-serve right from the carton. Simply pour and serve.

MORE INFORMATION



322171 - RC LEMON FLAVORED THICKENED WATER - HONEY

Pre-thickened beverage for patients with dysphagia (swallowing disorders). Ready to serve right from the carton. Packed in 46 ounce resealable aseptic carton. Formulated with aspartame to assist with calorie, carbohydrate and sugar consumption.



NUTRITIONAL ANALYSIS



Calories	18.3
Protein	0 g
Total Carbohydrates	3.9 g
Sugars	0 g
Dietary Fiber	0 g
Lactose	
Sucrose	
Vitamin A (IU)	0.181 0.181 iu
Vitamin A (RE)	0.181
Vitamin C	51.403 mg
Magnesium	0.002 mg
Monosodium	

Total Fat	0 g
Trans Fat	0 g
Saturated Fat	0 g
Added Sugars	
Polyunsaturated Fat	0 g
Monounsaturated Fat	0 g
Cholesterol	0 mg
Vitamin D	0 mcg
Vitamin E	0 mg
Folate	
Vitamin B-6	0 mg
Sulphites	

Sodium	8.8 mg
Calcium	0.728 mg
Iron	0 mg
Potassium	26.401 mg
Zinc	0 mg
Phosphorus	0 mg
Thiamin	
Niacin	
Riboflavin	
Vitamin B-12	0 mcg
Nitrates	

NUTRITIONAL CLAIMS



FREE_FROM_GLUTEN	YES
------------------	-----

KOSHER	YES
--------	-----