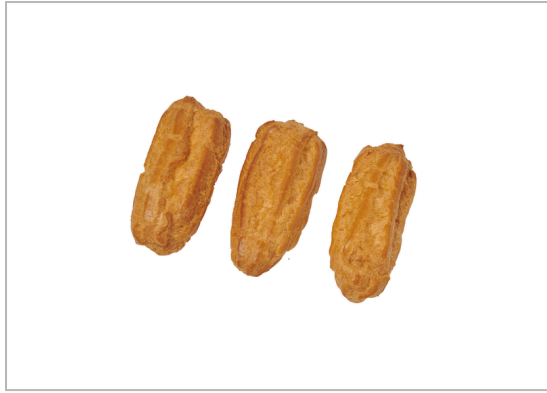


# 87820 - Éclair Shell



Delectably light, large and fluffy unfilled éclair shells bulk packed (72 units/case) for easy operator use. Handling recommendation: Keep frozen until ready to use. Fill shells with choice of Bavarian crème or whipped cream. Thaw, dip in melted chocolate or dust with powdered sugar, serve and enjoy! Shelf life (Frozen/Refrigerated/Ambient): 270 / 3 / 0 days



### MARKETING

Delectably light, large and fluffy unfilled éclair shells bulk packed 72 shells/case 1.02 oz unit weight. Fill shells with choice of Bavarian crème or whipped cream.

### PRODUCT SPECIFICATIONS

Code		GTIN		Pack Description			
#08782		00049800087828		72/1.02 OZ			
Brand	Brand Owner		GPC Description				
Rich's	Rich Products		Baking/Cooking Supplies (Frozen)				
Gross Weight	Net Weight	Case/Catch Weight	Country Of Origin	Kosher	Child Nutrition		
6.59 LBR	4.59 LBR	No	Canada	Yes	No		
Shipping							
Length	Width	Height	Volume	TlxHI	Shelf Life	Storage Temp From/To	
20 INH	13.13 INH	13 INH	1.98 FTQ	07x06	215 Days	-5 FAH / -2.5 FAH	
Traceability Regulation							
Regulation Type Code	Regulatory Act	Trade Item Regulation Compliant	Regulation Restrictions and Descriptors				
N/A	N/A	N/A	N/A				

### HANDLING SUGGESTIONS

Keep refrigerated, fill with desired choice of Bavarian creme or whipped cream.-----

### ALLERGENS

C = 'Contains'; MC = 'May Contain'; N = 'Free From'; UN = 'Undeclared'; INII = 'Intentionally nor Inherently Included'; 50 = 'Derived from Ingredients'; 60 = 'Not Derived From Ingredients'; NI = 'No Info'

- Milk - C
- Eggs - C
- Soybean - C
- Wheat - C
- Sesame - N
- Molluscs - N
- Peanuts - MC
- Tree - MC
- Fish - N
- Shellfish - N
- Crustaceans - N

## Nutrition Facts

72 Servings per container

**Serving Size** 1.02 OZ

**Amount Per Serving**  
**Calories** 130

% Daily Value\*

**Total Fat** 9 g 9%

Saturated Fat 4 g 4%

Trans Fat 0 g

**Cholesterol** 50 mg 49%

**Sodium** 130 mg 132%

**Total Carbohydrates** 9 g 9%

Dietary Fiber 0 g 0%

Total Sugars 0 g

Includes 0 g Added Sugars 0%

**Protein** 4 g

Vitamin D 0 mcg 0%

Calcium 10 mg 0%

Iron 0 mg 0%

Potassium 0 mg 0%

\* The % Daily Values (DV) tells you how much a nutrient in a serving of food contributes to a daily diet. 2,000 calories a day is used for general nutrition advice.

### INGREDIENTS

INGREDIENTS FOR U.S. MARKET: WATER, LIQUID WHOLE EGGS, ENRICHED WHEATFLOUR (FLOUR, ENZYME, NIACIN, REDUCED IRON, THIAMINE MONONITRATE, RIBOFLAVIN, FOLIC ACID), VEGETABLE SHORTENING (PALM OIL, SOYBEAN OIL), LIQUID EGG WHITES, SALT, AMONIUM BICARBONATE, LEAVENING (CORN STARCH, SODIUM BICARBONATE, SODIUM ALUMINUM SULPHATE, MONOCALCIUM PHOSPHATE). CONTAINS: EGGS, WHEAT. MANUFACTURED ON SHARED EQUIPMENTS THAT PROCESSES: MILK, TREE NUTS, SULFITES, SESAME SEEDS.

## 87820 - Éclair Shell

Delectably light, large and fluffy unfilled éclair shells bulk packed (72 units/case) for easy operator use. Handling recommendation: Keep frozen until ready to use. Fill shells with choice of Bavarian crème or whipped cream. Thaw, dip in melted chocolate or dust with powdered sugar, serve and enjoy! Shelf life (Frozen/Refrigerated/Ambient): 270 / 3 / 0 days



### PREPARATION & COOKING SUGGESTIONS

1. CUT OFF TOP OF ECLAIR SHELL AND FILL WITH RICH'S WHIP TOPPING. REPLACE THE TOP AND ICE WITH FUDGE ICING. 2. IMPORTANT! WHEN SHELLS ARE FILLED WITH CREAM TYPE FILLINGS, ALWAYS DISPLAY FINISHED PRODUCT IN REFRIGERATED DISPLAY EQUIPMENT.

### SERVING SUGGESTIONS

Delectably light, large and fluffy unfilled éclair shells bulk packed (72 units/case) for easy operator use. Handling recommendation: Keep frozen until ready to use. Fill shells with choice of Bavarian crème or whipped cream. Thaw, dip in melted chocolate or dust with powdered sugar, serve and enjoy! Shelf life (Frozen/Refrigerated/Ambient): 270 / 3 / 0 days

### MORE INFORMATION