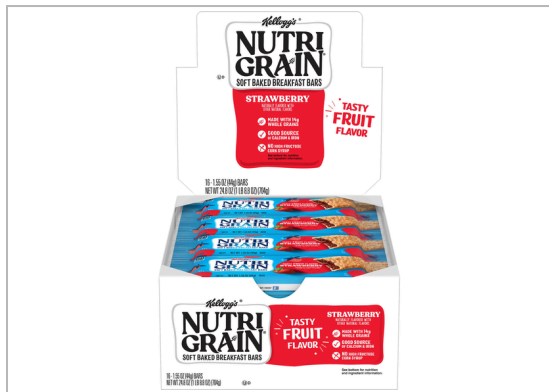


200039 - Kellogg's Nutri-Grain Cereal Bars Strawberry 24.8oz 9...



Made with whole grains and a sweet strawberry-flavored filling; Nutri-Grain Soft Baked Breakfast Bars Strawberry is a delicious way to rise and thrive. A convenient addition to any balanced breakfast, Nutri-Grain Soft Baked Breakfast Bars Strawberry are travel-ready and a perfect accompaniment to busy, on-the-go occasions.



MARKETING

Good source of calcium and iron; Made with 8g whole grains; No high-fructose corn syrup. Place near the breakfast bar, near accompaniments, at checkout and in break rooms; This item is a good fit for Convenience Stores, Recreation, Lodging, Hospitals, Transportation, B&I, Colleges/Universities, Military, Caterers. Convenient, ready to eat 1.55oz bars, in 24,8oz 16 count display trays, packaged for freshness and great taste, 96 case count, 16.000 IN x 9.500 IN x 66.438 IN. A convenient addition to any balanced breakfast, Nutri-Grain Soft Baked Breakfast Bars Strawberry are travel-ready and a perfect accompaniment to busy, on-the-go occasions ...

Nutrition Facts

1 Servings per container	
Serving Size	1 Bar
Amount Per Serving	
Calories	150
% Daily Value*	
Total Fat 3.5	4%
Saturated Fat 0.5 g	3%
Trans Fat 0 g	
Cholesterol 0 mg	0%
Sodium 140 mg	6%
Total Carbohydrates 31 g	11%
Dietary Fiber 3 g	11%
Total Sugars 14 g	
Includes 13 g Added Sugars	26%

Protein 2 g	
Vitamin D 2.2 mcg	10%
Calcium 140 mg	10%
Iron 1.9 mg	10%
Potassium 110 mg	2%

* The % Daily Values (DV) tells you how much a nutrient in a serving of food contributes to a daily diet. 2,000 calories a day is used for general nutrition advice.

PRODUCT SPECIFICATIONS

Code	Dist Prod Code	GTIN	Calculated Pack
3800059772	200039	00038000597725	96ct.

Brand	Brand Owner	GPC Description
Kellogg's	Kellogg Company US	Cereal/Muesli Bars

Gross Weight	Net Weight	Case/Catch Weight	Country Of Origin	Kosher	Child Nutrition
10.96 LBR	9.3 LBR	No	United States	Yes	No

Shipping						
Length	Width	Height	Volume	TlxHI	Shelf Life	Storage Temp From/To
16 INH	9.5 INH	6.438 INH	0.566 FTQ	12x6	240 Days	35 FAH / 85 FAH

ALLERGENS

C = 'Contains'; MC = 'May Contain'; N = 'Free From'; UN = 'Undeclared'; 30 = 'Free From Not Tested'; 50 = 'Derived from Ingredients'; 60 = 'Not Derived From Ingredients'; NI = 'No Info'

- Milk - C
- Eggs - 30
- Soy - C
- Wheat - C
- Sesame - 30
- Peanuts - 30
- Tree Nuts - 30
- Fish - 30
- Shellfish - 30

HANDLING SUGGESTIONS

Dry

SERVING SUGGESTIONS

PREPARATION & COOKING SUGGESTIONS

INGREDIENTS

INGREDIENTS: WHOLE WHEAT FLOUR, INVERT SUGAR, CORN SYRUP, WHOLE GRAIN OATS, SOYBEAN OIL, SUGAR, VEGETABLE GLYCERIN, SOLUBLE CORN FIBER, ENRICHED FLOUR (wheat flour, niacin, reduced iron, vitamin B1 [thiamin mononitrate], vitamin B2 [riboflavin], folic acid), DEXTROSE, FRUCTOSE. CONTAINS 2% OR LESS OF calcium carbonate, strawberry puree concentrate, whey, wheat bran, natural flavors, modified food starch, sodium citrate, vegetable juice for color, sodium alginate, cellulose, citric acid, salt, potassium bicarbonate, vitamin blend (salt, niacinamide, vitamin B1 [thiamin hydrochloride], vitamin B6 [pyridoxine hydrochloride], vitamin B2 [riboflavin], vitamin D3, vitamin B12), mono- and diglycerides, dicalcium phosphate, methylcellulose, soy lecithin, lemon juice concentrate, wheat gluten, carrageenan, iron, guar gum.

MORE INFORMATION

200039 - Kellogg's Nutri-Grain Cereal Bars Strawberry 24.8oz 9...



Made with whole grains and a sweet strawberry-flavored filling; Nutri-Grain Soft Baked Breakfast Bars Strawberry is a delicious way to rise and thrive. A convenient addition to any balanced breakfast, Nutri-Grain Soft Baked Breakfast Bars Strawberry are travel-ready and a perfect accompaniment to busy, on-the-go occasions.

NUTRITIONAL ANALYSIS



Calories	150
Protein	2 g
Total Carbohydrates	31 g
Sugars	14 g
Dietary Fiber	3 g
Lactose	
Sucrose	
Vitamin A (IU)	
Vitamin A (RE)	
Vitamin C	
Magnesium	
Monosodium	

Total Fat	3.5
Trans Fat	0 g
Saturated Fat	0.5 g
Added Sugars	13 g
Polyunsaturated Fat	
Monounsaturated Fat	
Cholesterol	0 mg
Vitamin D	2.2 mcg
Vitamin E	
Folate	
Vitamin B-6	
Sulphites	

Sodium	140 mg
Calcium	140 mg
Iron	1.9 mg
Potassium	110 mg
Zinc	
Phosphorus	
Thiamin	
Niacin	
Riboflavin	
Vitamin B-12	
Nitrates	

NUTRITIONAL CLAIMS



KOSHER	YES
--------	-----

MORE IMAGES

