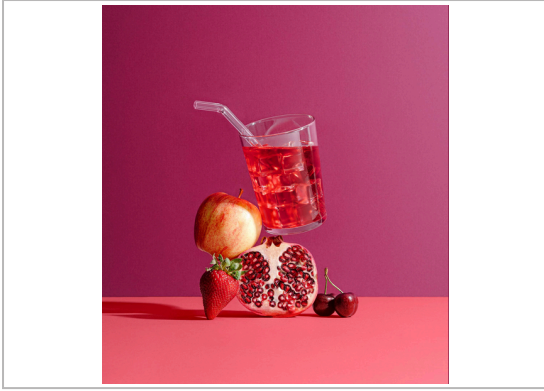


149821 - Tractor Beverage Co Organic Berry Patch Concentrate 3...



Fruity, apple and pomegranate flavor prepared with apple cider vinegar and fragrant spices. Tractor's organic craft beverage made with non-GMO ingredients. Mix 1 part concentrate to 8.5 parts water for a flavorful berry beverage. Yields approximately 2.38 gallons of prepared liquid or (25) 12 fl. oz. servings per carton. Best for use with refrigerated beverage dispenser or sl...



MARKETING

USDA Organic. Non-GMO. KVH
Kosher. Made In America

Nutrition Facts

158 Servings per container
Serving Size 12 fl oz as prepared (360mL)

Amount Per Serving
Calories 130

	% Daily Value*
Total Fat 0 g	0%
Saturated Fat 0 g	0%
Trans Fat 0 g	
Cholesterol 0 mg	0%
Sodium 0 mg	0%
Total Carbohydrates 31 g	11%
Dietary Fiber 0 g	0%
Total Sugars 31 g	
Includes 30 g Added Sugars	60%

Protein 0 g	
Vitamin D 0 mcg	0%
Calcium 10 mg	0%
Iron 0.4 mg	2%
Potassium 70 mg	0%

* The % Daily Values (DV) tells you how much a nutrient in a serving of food contributes to a daily diet. 2,000 calories a day is used for general nutrition advice.

PRODUCT SPECIFICATIONS

Code	Dist Prod Code	GTIN	Calculated Pack
6572	149821	0085360006572	12 x 32 OZ

Brand	Brand Owner	GPC Description
Tractor Beverage Co	Red Tractor Soda Pop LLC	Drinks Flavoured - Not Ready to Drink

Gross Weight	Net Weight	Case/Catch Weight	Country Of Origin	Kosher	Child Nutrition
34 LBR	33.36 LBR	No	United States	Yes	No

Shipping						
Length	Width	Height	Volume	TlxHI	Shelf Life	Storage Temp From/To
18.25 INH	9.5 INH	5.8 INH	0.58 FTQ	10x5	365 Days	32 FAH / 71 FAH

ALLERGENS

C = 'Contains'; MC = 'May Contain'; N = 'Free From'; UN = 'Undeclared'; 30 = 'Free From Not Tested'; 50 = 'Derived from Ingredients'; 60 = 'Not Derived From Ingredients'; NI = 'No Info'

- Milk - N
- Eggs - N
- Soy - N
- Wheat - N
- Sesame - NI
- Peanuts - N
- Tree Nuts - N
- Fish - N
- Shellfish - NI

SERVING SUGGESTIONS

Serve cold over ice.

INGREDIENTS

Organic Cane Sugar, Water, Organic Pomegranate Juice Concentrate, Organic Strawberry Juice Concentrate, Organic Apple Cider Vinegar, Organic Cherry Juice Concentrate, Citric Acid, Organic Fruit and Vegetable Juice for Color, Tartaric Acid, Natural Flavor.

HANDLING SUGGESTIONS

Store unopened at Ambient Temperatures.

PREPARATION & COOKING SUGGESTIONS

MIXING / POURING INSTRUCTIONS: Shake well. Pour filtered water into bubbler machine followed by combi at a ratio of 8.5:1. For best results, leave agitator and chiller on at all times. Replace unused product and thoroughly clean bubbler every 72 hours.

MORE INFORMATION

149821 - Tractor Beverage Co Organic Berry Patch Concentrate 3...



Fruity, apple and pomegranate flavor prepared with apple cider vinegar and fragrant spices. Tractor's organic craft beverage made with non-GMO ingredients. Mix 1 part concentrate to 8.5 parts water for a flavorful berry beverage. Yields approximately 2.38 gallons of prepared liquid or (25) 12 fl. oz. servings per carton. Best for use with refrigerated beverage dispenser or sl...

NUTRITIONAL ANALYSIS



Calories	130
Protein	0 g
Total Carbohydrates	31 g
Sugars	31 g
Dietary Fiber	0 g
Lactose	
Sucrose	
Vitamin A (IU)	
Vitamin A (RE)	
Vitamin C	
Magnesium	
Monosodium	

Total Fat	0 g
Trans Fat	0 g
Saturated Fat	0 g
Added Sugars	30 g
Polyunsaturated Fat	
Monounsaturated Fat	
Cholesterol	0 mg
Vitamin D	0 mcg
Vitamin E	
Folate	
Vitamin B-6	
Sulphites	

Sodium	0 mg
Calcium	10 mg
Iron	0.4 mg
Potassium	70 mg
Zinc	
Phosphorus	
Thiamin	
Niacin	
Riboflavin	
Vitamin B-12	
Nitrates	

NUTRITIONAL CLAIMS



GMO	FREE_FROM
FREE_FROM_GLUTEN	YES

KOSHER	YES
--------	-----

VEGAN	YES
-------	-----

MORE IMAGES

