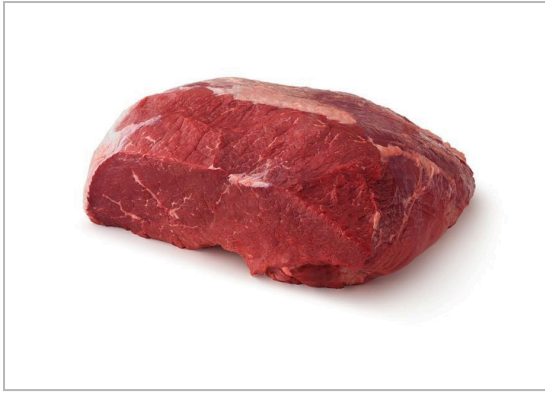


# 1208537 - Angus Beef Top Inside Round



Excel's SmartChoice Inside (Top) Round is a boneless portion of the flat cut primal round and is the inside portion of the round cushion. The side and cap muscles remain. The gracilis membrane is removed. The inside is trimmed to 1/4" of fat thickness. The Meyer Company Ranch is the largest working ranch in the Blackfoot River Valley of western Montana. Bob Meyer pur...



## MARKETING



## Nutrition Facts

80 Servings per container

**Serving Size** 4.0 OZ

**Amount Per Serving**  
**Calories** 200

% Daily Value\*

**Total Fat** 11 g 17%

Saturated Fat 4.5 g 22%

Trans Fat 0 g

**Cholesterol** 70 mg 23%

**Sodium** 55 mg 2%

**Total Carbohydrates** 0 g 0%

Dietary Fiber 0 g 0%

Total Sugars 0 g

Includes 0 g Added Sugars 0%

**Protein** 24 g

Vitamin D 0 mcg 0%

Calcium 0 mg 0%

Iron 1 mg 0%

Potassium 0 mg 0%

\* The % Daily Values (DV) tells you how much a nutrient in a serving of food contributes to a daily diet. 2,000 calories a day is used for general nutrition advice.

## PRODUCT SPECIFICATIONS



Code		GTIN		Pack Description		
#032168-09		90028749162738		3/20 LB		
Brand	Brand Owner		GPC Description			
MEYER	Meyer Natural Foods		Beef - Unprepared/Unprocessed			
Gross Weight	Net Weight	Case/Catch Weight	Country Of Origin	Kosher	Child Nutrition	
67.2 LBR	65 LBR	Yes	United States	Undeclared	No	
Shipping						
Length	Width	Height	Volume	TlxHI	Shelf Life	Storage Temp From/To
23.438 INH	15.813 INH	9.313 INH	2 FTQ	05x05	21 Days	35 FAH / 37.5 FAH
Traceability Regulation						
Regulation Type Code	Regulatory Act	Trade Item Regulation Compliant		Regulation Restrictions and Descriptors		
N/A	N/A	N/A		N/A		

## HANDLING SUGGESTIONS



keep refrigerated or frozen---UNIT UPC: 228749162739---

## ALLERGENS



C = 'Contains'; MC = 'May Contain'; N = 'Free From'; UN = 'Undeclared'; INII = 'Intentionally nor Inherently Included'; 50 = 'Derived from Ingredients'; 60 = 'Not Derived From Ingredients'; NI = 'No Info'

- Milk - N
- Eggs - N
- Soybean - N
- Wheat - N
- Sesame - N
- Molluscs - N
- Peanuts - N
- Tree - N
- Fish - N
- Shellfish - N
- Crustaceans - N

## INGREDIENTS



angus beef flat cut round

MEYER

## 1208537 - Angus Beef Top Inside Round

Excel's SmartChoice Inside (Top) Round is a boneless portion of the flat cut primal round and is the inside portion of the round cushion. The side and cap muscles remain. The gracilis membrane is removed. The inside is trimmed to 1/4" of fat thickness. The Meyer Company Ranch is the largest working ranch in the Blackfoot River Valley of western Montana. Bob Meyer pur...



### PREPARATION & COOKING SUGGESTIONS

<https://meyermarket.com/pages/how-to>

### SERVING SUGGESTIONS

<https://meyermarket.com/pages/recipes?searchtext=beef>

### MORE INFORMATION