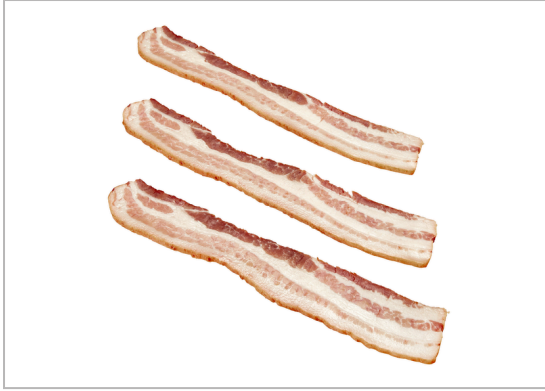


# 440354 - OLD SMOKEHOUSE Applewood Smoked Bacon 13-17 Slices Pe...



OLD SMOKEHOUSE® Applewood Bacon delivers improved cook yield and superior plate coverage. The fresh pack packaging ensures \"out of the smokehouse\" flavor, eliminating flavor loss.



## MARKETING

This is a distinctive, rich-smoke, bacon with a one-of-a-kind flavor.. Delivers improved cook yield and superior plate coverage.. Approximately 15 slices per pound.. 2-10 Pound Packs

## PRODUCT SPECIFICATIONS

Code	Dist Prod Code	GTIN	Calculated Pack
32669	440354	10037600326695	OLD SMOKEHOUSE Applewood Smoked Bacon 13-17 Slices Per Pound

Brand	Brand Owner	GPC Description
OLD SMOKEHOUSE	Hormel Foods Corporation	Pork - Unprepared/Unprocessed

Gross Weight	Net Weight	Case/Catch Weight	Country Of Origin	Kosher	Child Nutrition
21.25 LBR	20 LBR	No	United States	Undeclared	No

Shipping						
Length	Width	Height	Volume	Tlx/Hi	Shelf Life	Storage Temp From/To
16.81 INH	11.13 INH	6.69 INH	0.72434 FTQ	9x6	80 Days	28 FAH / 40 FAH

## ALLERGENS

C = 'Contains'; MC = 'May Contain'; N = 'Free From'; UN = 'Undeclared'; 30 = 'Free From Not Tested'; 50 = 'Derived from Ingredients'; 60 = 'Not Derived From Ingredients'; NI = 'No Info'

- Milk - N
- Eggs - N
- Soy - N
- Wheat - N
- Sesame - N
- Peanuts - N
- Tree Nuts - N
- Fish - N
- Shellfish - N

## HANDLING SUGGESTIONS

RECOMMENDED TEMPERATURE: 34F. MINIMUM TEMPERATURE: 28F. MAXIMUM TEMPERATURE: 40F. STORAGE: KEEP REFRIGERATED.

## MORE INFORMATION

Telephone : 800-533-2000

# Nutrition Facts

75 Servings per container

**Serving Size** 2 Pan Fried Slices

**Amount Per Serving**  
**Calories** **130**

% Daily Value\*

<b>Total Fat</b> 10	<b>13%</b>
Saturated Fat 4 g	<b>20%</b>
Trans Fat 0 g	
<b>Cholesterol</b> 25 mg	<b>8%</b>
<b>Sodium</b> 450 mg	<b>20%</b>
<b>Total Carbohydrates</b> 1 g	<b>0%</b>
Dietary Fiber 0 g	<b>0%</b>
Total Sugars 1 g	
Includes 1 g Added Sugars	<b>2%</b>

**Protein** 8 g

Vitamin D 0 mcg	0%
Calcium 0 mg	0%
Iron 0 mg	0%
Potassium 0 mg	0%

\* The % Daily Values (DV) tells you how much a nutrient in a serving of food contributes to a daily diet. 2,000 calories a day is used for general nutrition advice.

## SERVING SUGGESTIONS

## INGREDIENTS

Cured With Water, Salt, Sugar, Sodium Phosphates, Sodium Erythorbate, Sodium Nitrite.

## PREPARATION & COOKING SUGGESTIONS

# 440354 - OLD SMOKEHOUSE Applewood Smoked Bacon 13-17 Slices Pe...



OLD SMOKEHOUSE® Applewood Bacon delivers improved cook yield and superior plate coverage. The fresh pack packaging ensures \"out of the smokehouse\" flavor, eliminating flavor loss.

## NUTRITIONAL ANALYSIS



Calories	130
Protein	8 g
Total Carbohydrates	1 g
Sugars	1 g
Dietary Fiber	0 g
Lactose	
Sucrose	
Vitamin A (IU)	
Vitamin A (RE)	
Vitamin C	
Magnesium	
Monosodium	

Total Fat	10
Trans Fat	0 g
Saturated Fat	4 g
Added Sugars	1 g
Polyunsaturated Fat	
Monounsaturated Fat	
Cholesterol	25 mg
Vitamin D	0 mcg
Vitamin E	
Folate	
Vitamin B-6	
Sulphites	

Sodium	450 mg
Calcium	0 mg
Iron	0 mg
Potassium	0 mg
Zinc	
Phosphorus	
Thiamin	
Niacin	
Riboflavin	
Vitamin B-12	
Nitrates	

## NUTRITIONAL CLAIMS



## MORE IMAGES

