

440847 - PULLED PORK BBQ WITH NASHVILLE-STYLE BBQ SAUCE (TUBS...

Pulled pork BBQ with Nashville-style sauce (tomato-based with sweet, smoky, and spicy flavors and a hint of pepper). Packed in tubs.



MARKETING

Pulled pork BBQ with Nashville-style sauce (tomato-based with sweet, smoky, and spicy flavors and a hint of pepper). Packed in tubs.



Nutrition Facts

16.0 Servings per container	
Serving Size	1/2 CUP (140 G)
Amount Per Serving	
Calories	240
% Daily Value*	
Total Fat 9 g	12%
Saturated Fat 3 g	16%
Trans Fat 0 g	
Cholesterol 65 mg	22%
Sodium 710 mg	31%
Total Carbohydrates 19 g	7%
Dietary Fiber 1 g	3%
Total Sugars 16 g	
Includes 15 g Added Sugars	30%

Protein 21 g	
Vitamin D 0 mcg	0%
Calcium 20 mg	2%
Iron 1.4 mg	8%
Potassium 410 mg	8%

* The % Daily Values (DV) tells you how much a nutrient in a serving of food contributes to a daily diet. 2,000 calories a day is used for general nutrition advice.

PRODUCT SPECIFICATIONS

Code	Dist Prod Code		GTIN			Calculated Pack	
09259	440847		10049800092591			4 x 5#	
Brand		Brand Owner			GPC Description		
SMOKEHOUSE BAR-B-Q		RICH PRODUCTS CORPORATION			Pork - Prepared/Processed		
Gross Weight	Net Weight	Case/Catch Weight	Country Of Origin		Kosher	Child Nutrition	
21.51 LBR	20.0 LBR	No	United States		Undeclared	No	
Shipping							
Length	Width	Height	Volume	TlxHI	Shelf Life	Storage Temp From/To	
13.313 INH	13.25 INH	7.125 INH	0.7273 FTQ	9x7	365 Days	-10.0 FAH / 0.0 FAH	
Traceability Regulation							
Regulation Type Code		Regulatory Act	Trade Item Regulation Compliant			Regulation Restrictions and Descriptors	
TRACEABILITY_REGULATION		FSMA204	NOT_APPLICABLE			NOT_COVERED_BY_FTL	

HANDLING SUGGESTIONS

Keep Frozen



ALLERGENS

C = 'Contains'; MC = 'May Contain'; N = 'Free From'; UN = 'Undeclared'; 30 = 'Free From Not Tested'; 50 = 'Derived from Ingredients'; 60 = 'Not Derived From Ingredients'; NI = 'No Info'

- Milk - 30
- Eggs - 30
- Soybean - 30
- Wheat - 30
- Sesame - 30
- AU - C
- Mustard - C
- Peanuts - 30
- Tree - 30
- Fish - 30
- Shellfish - 30
- Crustaceans - 30
- Cereals - 30
- Molluscs - 30



INGREDIENTS

PORK, SAUCE (KETCHUP [TOMATO CONCENTRATE, DISTILLED VINEGAR, HIGH FRUCTOSE CORN SYRUP, CORN SYRUP, SALT, SPICE, ONION POWDER, NATURAL FLAVOR], WATER, BROWN SUGAR, WORCESTERSHIRE SAUCE CONCENTRATE [DISTILLED VINEGAR, MOLASSES, CORN SYRUP, WATER, SALT, CARAMEL COLOR, GARLIC POWDER, SUGAR, SPICES, TAMARIND, NATURAL FLAVOR], MUSTARD [DISTILLED VINEGAR, WATER, MUSTARD SEED, SALT, TURMERIC, PAPRIKA, SPICE, GARLIC POWDER], SALT, NATURAL SMOKE FLAVOR, SPICES).

SMOKEHOUSE BAR-B-Q

440847 - PULLED PORK BBQ WITH NASHVILLE-STYLE BBQ SAUCE (TUBS...

Pulled pork BBQ with Nashville-style sauce (tomato-based with sweet, smoky, and spicy flavors and a hint of pepper). Packed in tubs.

PREPARATION & COOKING SUGGESTIONS

Keep frozen, Thaw under refrigeration, Do not refreeze, Heat and Serve.

SERVING SUGGESTIONS

Sandwich, Pizza Topping, Salad Toppings, Appetizer Fillings

MORE INFORMATION

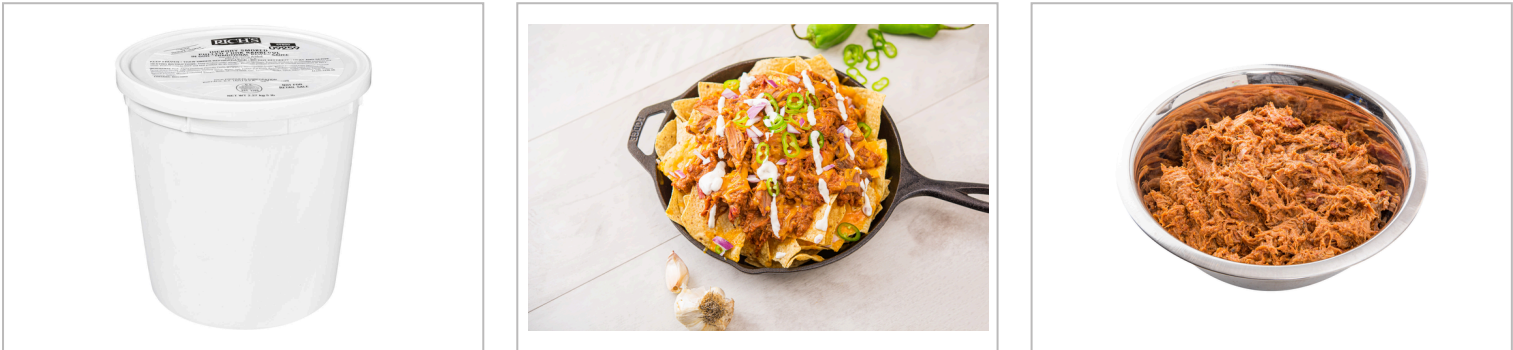
Telephone : Call 1-800-356-7094 or email helpline@rich.com

NUTRITIONAL ANALYSIS

Calories	171.83	Total Fat	6.417 g	Sodium	510.146 mg
Protein	14.708 g	Trans Fat	0.005 g	Calcium	14.834 mg
Total Carbohydrates	13.811 g	Saturated Fat	2.282 g	Iron	1.017 mg
Sugars	11.464 g	Added Sugars	10.56 g	Potassium	290.108 mg
Dietary Fiber	0.553 g	Polyunsaturated Fat	1.102 g	Zinc	
Lactose		Monounsaturated Fat	2.61 g	Phosphorus	
Sucrose		Cholesterol	47.648 mg		
Vitamin A (IU)	113.271 113.271 iu	Vitamin D	0.029 mcg	Thiamin	0 mg
Vitamin A (RE)	113.271	Vitamin E		Niacin	0 mg
Vitamin C	4.581 mg	Folate		Riboflavin	0 mg
Magnesium		Vitamin B-6		Vitamin B-12	
Monosodium		Sulphites		Nitrates	

NUTRITIONAL CLAIMS

MORE IMAGES



440847 - PULLED PORK BBQ WITH NASHVILLE-STYLE BBQ SAUCE (TUBS...

Pulled pork BBQ with Nashville-style sauce (tomato-based with sweet, smoky, and spicy flavors and a hint of pepper). Packed in tubs.

MORE IMAGES

