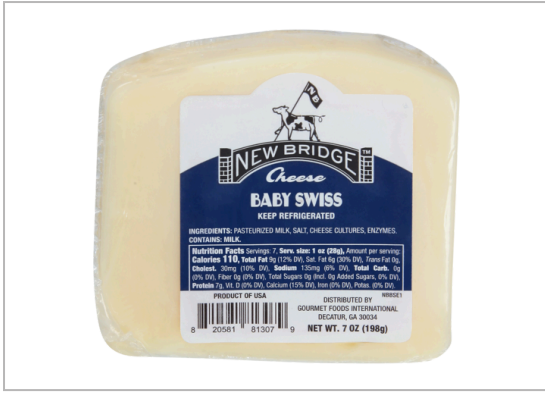


# 81307 - Baby Swiss



Baby Swiss is a go-to family favorite in many cheese loving households because it is actually the one thing the entire family can agree on! Created to be softer and milder than our traditional Swiss cheese, the flavor is still very much nutty and buttery, but also milky and slightly sweet with a dense yet palate melting texture. Great for melting and using in omelet and quiches...



## MARKETING

New Bridge Baby Swiss was created to be softer and milder than our traditional Swiss cheese, the flavor is still very much nutty and buttery, but also milky and slightly sweet with a dense melting texture.

## Nutrition Facts

Servings per container	1.0 OZ
<b>Serving Size</b>	<b>1.0 OZ</b>
<b>Amount Per Serving</b>	<b>110</b>
<b>Calories</b>	<b>% Daily Value*</b>
<b>Total Fat</b> 9 g	<b>12%</b>
Saturated Fat 6 g	<b>30%</b>
Trans Fat 0 g	
<b>Cholesterol</b> 30 mg	<b>10%</b>
<b>Sodium</b> 135 mg	<b>6%</b>
<b>Total Carbohydrates</b> 0 g	<b>0%</b>
Dietary Fiber 0 g	<b>0%</b>
Total Sugars 0 g	
Includes 0 g Added Sugars	<b>0%</b>

<b>Protein</b> 7 g	
Vitamin D 0 mcg	0%
Calcium 200 mg	15%
Iron 0 mg	0%
Potassium 20 mg	0%

\* The % Daily Values (DV) tells you how much a nutrient in a serving of food contributes to a daily diet. 2,000 calories a day is used for general nutrition advice.

## PRODUCT SPECIFICATIONS

Code		GTIN		Pack Description		
10820581813076		10820581813076		12/7 OZ		
Brand		Brand Owner		GPC Description		
New Bridge		New Bridge		Cheese (Perishable)		
Gross Weight	Net Weight	Case/Catch Weight	Country Of Origin	Kosher	Child Nutrition	
6.2 LBR	5.25 LBR	No	United States	Undeclared	No	
Shipping						
Length	Width	Height	Volume	Tlx/Hi	Shelf Life	Storage Temp From/To
9.5 INH	6.375 INH	5 INH	0.18 FTQ	28x08	122 Days	35 FAH / 37.5 FAH
Traceability Regulation						
Regulation Type Code	Regulatory Act	Trade Item Regulation Compliant	Regulation Restrictions and Descriptors			
N/A	N/A	N/A	N/A			

## HANDLING SUGGESTIONS

Refrigerate until use. Let the cheese come to room temperature before serving. Depending on the room temperature this can be anywhere from 30-60 minutes before serving. Right before serving, remove from packaging. Enjoy!---UNIT UPC: 820581813079---

## ALLERGENS

C = 'Contains'; MC = 'May Contain'; N = 'Free From'; UN = 'Undeclared'; INI = 'Intentionally nor Inherently Included'; 50 = 'Derived from Ingredients'; 60 = 'Not Derived From Ingredients'; NI = 'No Info'

- Milk - C
- Eggs - N
- Soybean - N
- Wheat - N
- Sesame - N
- Molluscs - N
- Peanuts - N
- Tree - N
- Fish - N
- Shellfish - N
- Crustaceans - N

## INGREDIENTS

Pasteurized Part Skim Milk, Cheese Cultures, Salt, Enzymes

## 81307 - Baby Swiss

Baby Swiss is a go-to family favorite in many cheese loving households because it is actually the one thing the entire family can agree on! Created to be softer and milder than our traditional Swiss cheese, the flavor is still very much nutty and buttery, but also milky and slightly sweet with a dense yet palate melting texture. Great for melting and using in omelet and quiches...



### PREPARATION & COOKING SUGGESTIONS

Ready to go

### SERVING SUGGESTIONS

Great for melting and using in omelet and quiches. A great complement to cashews, ham, pears, and corned beef.

### MORE INFORMATION