

- ARMOUR STAR Sliced Dried Beef

Armour Star Sliced Dried Beef is made with fresh beef that is dried to take on a robust flavor. Serve this packaged meat cold in appetizers, sandwiches or salads, or hot in zesty soups and casseroles. It's an easy addition to your favorite recipes, such as the classic creamed chipped beef on toast. Delicious and convenient, Armour Star Sliced Dried Beef is also great for picnic...



MARKETING

Includes twelve (12) 4.5-ounce jars of Armour Star Sliced Dried Beef. Dried for robust flavor, this snack is made with fresh beef. Serve this packaged meat cold in appetizers, sandwiches or salads. Keep dried beef in your pantry for zesty soups and casseroles. An easy addition to the classic creamed chipped beef on toast. SNAP & EBT eligible food item

Nutrition Facts

4 Servings per container	
Serving Size	7 slices (30g)
Amount Per Serving	
Calories	50
% Daily Value*	
Total Fat 1.5	2%
Saturated Fat 1 g	5%
Trans Fat 0 g	
Cholesterol 20 mg	7%
Sodium 1400 mg	61%
Total Carbohydrates 2 g	1%
Dietary Fiber 0 g	0%
Total Sugars 1 g	
Includes Added Sugars	%

Protein 8 g	
Vitamin D 0 mcg	0%
Calcium 0 mg	0%
Iron 0.9 mg	6%
Potassium 120 mg	2%

* The % Daily Values (DV) tells you how much a nutrient in a serving of food contributes to a daily diet. 2,000 calories a day is used for general nutrition advice.

PRODUCT SPECIFICATIONS

Code	Dist Prod Code	GTIN	Calculated Pack			
1700001686	461434	10017000016860	12/4.5 OZ			
Brand	Brand Owner	GPC Description				
Armour	[[Conagra Brands, Inc]]	Mixed Species Meat/Poultry/Other Animal - Alternative Meat - Prepared/Processed				
Gross Weight	Net Weight	Case/Catch Weight	Country Of Origin	Kosher	Child Nutrition	
9 LBR	3.375 LBR	No	United States	Undeclared	No	
Shipping						
Length	Width	Height	Volume	TlxHI	Shelf Life	Storage Temp From/To
12.3 INH	9.4 INH	4.6 INH	0.308 FTQ	15x12	730 Days	50 FAH / 85 FAH
Traceability Regulation						
Regulation Type Code	Regulatory Act	Trade Item Regulation Compliant	Regulation Restrictions and Descriptors			
BUY_AMERICAN_PROVISION_USDA	N/A	NOT_APPLICABLE	N/A			

HANDLING SUGGESTIONS

Follow storage and usage instructions as printed on consumer packaging.

ALLERGENS

C = 'Contains'; MC = 'May Contain'; N = 'Free From'; UN = 'Undeclared'; INII = 'Intentionally nor Inherently Included'; 50 = 'Derived from Ingredients'; 60 = 'Not Derived From Ingredients'; NI = 'No Info'

- Milk - INII
- Eggs - INII
- Soybean - INII
- Wheat - INII
- Sesame - INII
- Cereals - INII
- Mustard - INII
- Molluscs - INII
- Peanuts - INII
- Tree - INII
- Fish - INII
- Shellfish - INII
- Crustaceans - INII
- Celery - INII
- Lupine - INII

INGREDIENTS

Beef, Salt, Sugar, Less Than 2% Of: Sorbitol, Water, Sodium Erythorbate, Sodium Nitrite, Caramel Color.

- ARMOUR STAR Sliced Dried Beef

Armour Star Sliced Dried Beef is made with fresh beef that is dried to take on a robust flavor. Serve this packaged meat cold in appetizers, sandwiches or salads, or hot in zesty soups and casseroles. It's an easy addition to your favorite recipes, such as the classic creamed chipped beef on toast. Delicious and convenient, Armour Star Sliced Dried Beef is also great for picnic...

PREPARATION & COOKING SUGGESTIONS

Please follow preparation instructions as printed on the consumer packaging.

SERVING SUGGESTIONS

Follow serving suggestions as printed on the packaging.

MORE INFORMATION

Website : [\[\[https://help.conagra.com/pim/\]\]](https://help.conagra.com/pim/)

NUTRITIONAL ANALYSIS

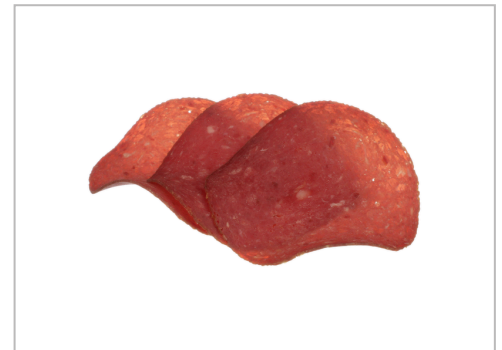
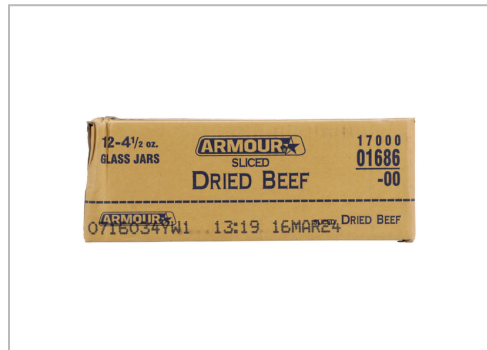
Calories	50
Protein	8 g
Total Carbohydrates	2 g
Sugars	1 g
Dietary Fiber	0 g
Lactose	
Sucrose	
Vitamin A (IU)	
Vitamin A (RE)	
Vitamin C	
Magnesium	
Monosodium	

Total Fat	1.5
Trans Fat	0 g
Saturated Fat	1 g
Added Sugars	
Polyunsaturated Fat	0 g
Monounsaturated Fat	0 g
Cholesterol	20 mg
Vitamin D	0 mcg
Vitamin E	
Folate	
Vitamin B-6	
Sulphites	

Sodium	1400 mg
Calcium	0 mg
Iron	0.9 mg
Potassium	120 mg
Zinc	
Phosphorus	
Thiamin	
Niacin	
Riboflavin	
Vitamin B-12	
Nitrates	

NUTRITIONAL CLAIMS

MORE IMAGES



Armour

- ARMOUR STAR Sliced Dried Beef

Armour Star Sliced Dried Beef is made with fresh beef that is dried to take on a robust flavor. Serve this packaged meat cold in appetizers, sandwiches or salads, or hot in zesty soups and casseroles. It's an easy addition to your favorite recipes, such as the classic creamed chipped beef on toast. Delicious and convenient, Armour Star Sliced Dried Beef is also great for picnic...



MORE IMAGES

