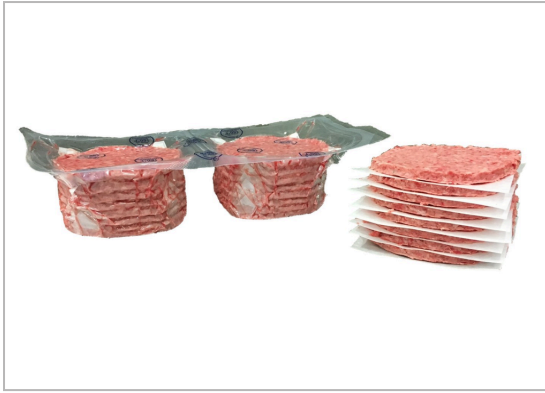


- 3.2z Ground Beef Patty, 80/20, Raw, Fresh, Vacuum Packed

Labor Savings Pre-formed and Weighed patties for cost control Quick and easy to prepare. FRESH products are Vacuum packed for extended shelf life. Full HACCP program, certified by outside inspection service. All products pass thru Metal Detection & Bone Removal System. 2 day advance on all fresh orders, 10 day on frozen



MARKETING



Nutrition Facts

Servings per container

Serving Size

Amount Per Serving

Calories

% Daily Value*

Total Fat %

Saturated Fat %

Trans Fat

Cholesterol %

Sodium %

Total Carbohydrates %

Dietary Fiber %

Total Sugars

Includes Added Sugars %

Protein

Vitamin D %

Calcium %

Iron %

Potassium %

* The % Daily Values (DV) tells you how much a nutrient in a serving of food contributes to a daily diet. 2,000 calories a day is used for general nutrition advice.

PRODUCT SPECIFICATIONS



Code	Dist Prod Code	GTIN	Calculated Pack			
99735120	322055	00076176935125	64/3.2 OZ			
Brand	Brand Owner	GPC Description				
Wolverine	Wolverine Packing Co.	Beef - Unprepared/Unprocessed				
Gross Weight	Net Weight	Case/Catch Weight	Country Of Origin	Kosher	Child Nutrition	
13.8 LBR	12.8 LBR	No	AU, CA, MX, NZ, US	Undeclared	No	
Shipping						
Length	Width	Height	Volume	TlxHI	Shelf Life	Storage Temp From/To
19.88 INH	11 INH	2.88 INH	0.364 FTQ	8x14	24 Days	32 FAH / 38 FAH
Traceability Regulation						
Regulation Type Code	Regulatory Act	Trade Item Regulation Compliant	Regulation Restrictions and Descriptors			
N/A	N/A	N/A	N/A			

HANDLING SUGGESTIONS



KEEP REFRIGERATED 28-34° or KEEP FROZEN 0-10° All of our Fresh Ground Beef Patties are now packaged in our EZ Peel Pouch. Added safety and convenience, no knife required to open the package. Just grasp the corner of the top seal and peel open. The pouch will then relax and allow the ez removal of the Ground Beef Patties. Frozen Patties are Stacked on Edge and Put into a Sealed Poly Bag.

ALLERGENS



C = 'Contains'; MC = 'May Contain'; N = 'Free From'; UN = 'Undeclared'; INI = 'Intentionally nor Inherently Included'; 50 = 'Derived from Ingredients'; 60 = 'Not Derived From Ingredients'; NI = 'No Info'

- Milk - NI
- Eggs - NI
- Soybean - NI
- Wheat - NI
- Sesame - NI
- Peanuts - NI
- Tree - NI
- Fish - NI
- Shellfish - NI

INGREDIENTS



- 3.2z Ground Beef Patty, 80/20, Raw, Fresh, Vacuum Packed

Labor Savings Pre-formed and Weighed patties for cost control Quick and easy to prepare. FRESH products are Vacuum packed for extended shelf life. Full HACCP program, certified by outside inspection service. All products pass thru Metal Detection & Bone Removal System. 2 day advance on all fresh orders, 10 day on frozen

PREPARATION & COOKING SUGGESTIONS

PREHEAT GRILL TO 325 DEGREES. COOK PATTY UNTIL JUICES APPEAR ON TOP FLIP AND COOK UNTIL JUICES RUN CLEAR. COOK UNTIL INTERNAL TEMP REACHES 160 DEGREES. Keep Refrigerated or Frozen. Thaw in Refrigerator or Microwave. Keep Raw Meat And Poultry Separate From Other Foods. Wash Working Surfaces (Including Cutting Boards), Utensils, and Hands after Touching Raw Meat or Poultry. Cook Thoroughly To 160° Keep Hot Foods Hot. Refrigerate Leftovers Immediately or Discard.

SERVING SUGGESTIONS

MORE INFORMATION

NUTRITIONAL ANALYSIS

NUTRITIONAL CLAIMS