

## - Kretschmar Premium Deli Honey Ham, Off the Bone, 2/9.5 lb, ...

Kretschmar® Ham offers a convenient sandwich filling that's already sliced and ready to eat so you can quickly add it to sandwiches or snacks. Real honey adds a rich sweetness to complement our off the bone deli ham, creating a taste the whole family can enjoy. Keep our honey cured ham in your refrigerator deli drawer to keep it fresh.



### MARKETING

One package of deli-sliced Kretschmar® Premium Deli Off the Bone Honey Ham. Offers the flavor of bone-in ham with the convenience of boneless deli fresh lunch meat. Made with real honey to sweeten our honey ham deli meat for a premium taste. Sliced in the deli to create consistently thick pieces that are easy to add to recipes. Smoked for hours to create rich flavor. Add to a wrap, grilled cheese sandwich, panini, quick breakfast or other recipes for versatile use all day long

## Nutrition Facts

70 Servings per container

**Serving Size** 2 oz.

**Amount Per Serving**  
**Calories** 90

% Daily Value\*

**Total Fat** 3.5 4%

Saturated Fat 1 g 5%

Trans Fat 0 g

**Cholesterol** 30 mg 10%

**Sodium** 600 mg 26%

**Total Carbohydrates** 4 g 1%

Dietary Fiber 0 g 0%

Total Sugars 3 g

Includes 3 g Added Sugars 6%

**Protein** 10 g

Vitamin D 0.2 mcg 0%

Calcium 0 mg 0%

Iron 0.5 mg 2%

Potassium 350 mg 8%

\* The % Daily Values (DV) tells you how much a nutrient in a serving of food contributes to a daily diet. 2,000 calories a day is used for general nutrition advice.

### PRODUCT SPECIFICATIONS

Code	Dist Prod Code	GTIN	Calculated Pack			
90039073047714	219307	90039073047714	2/9.5#AVG			
Brand	Brand Owner	GPC Description				
Kretschmar	JOHN MORRELL & CO	Pork - Prepared/Processed				
Gross Weight	Net Weight	Case/Catch Weight	Country Of Origin	Kosher	Child Nutrition	
19.14 LBR	17.84 LBR	Yes	United States	Undeclared	No	
Shipping						
Length	Width	Height	Volume	Tlx/Hi	Shelf Life	Storage Temp From/To
16.5 INH	11.5 INH	6.188 INH	0.679 FTQ	8x10	100 Days	28 FAH / 32 FAH
Traceability Regulation						
Regulation Type Code	Regulatory Act	Trade Item Regulation Compliant	Regulation Restrictions and Descriptors			
N/A	N/A	N/A	N/A			

### HANDLING SUGGESTIONS

Store and use per package instructions.

### ALLERGENS

C = 'Contains'; MC = 'May Contain'; N = 'Free From'; UN = 'Undeclared'; INII = 'Intentionally nor Inherently Included'; 50 = 'Derived from Ingredients'; 60 = 'Not Derived From Ingredients'; NI = 'No Info'

- Milk - N
- Eggs - N
- Soybean - N
- Wheat - N
- Sesame - N
- Peanuts - N
- Tree - N
- Fish - N
- Shellfish - NI
- Crustaceans - N

### INGREDIENTS

Cured with Water, Honey, Fructose, Contains 2% or Less of Salt, Potassium Lactate, Sodium Lactate, Sodium Phosphates, Sodium Diacetate, Sodium Erythorbate, Sodium Nitrite.

## - Kretschmar Premium Deli Honey Ham, Off the Bone, 2/9.5 lb, ...

Kretschmar® Ham offers a convenient sandwich filling that's already sliced and ready to eat so you can quickly add it to sandwiches or snacks. Real honey adds a rich sweetness to complement our off the bone deli ham, creating a taste the whole family can enjoy. Keep our honey cured ham in your refrigerator deli drawer to keep it fresh.

### PREPARATION & COOKING SUGGESTIONS

No preparation required.

### SERVING SUGGESTIONS

Ham is the perfect holiday center piece or as a weekly meal , serve center of plate, with eggs, or as an addition to a grilled cheese sandwich

### MORE INFORMATION

### NUTRITIONAL ANALYSIS

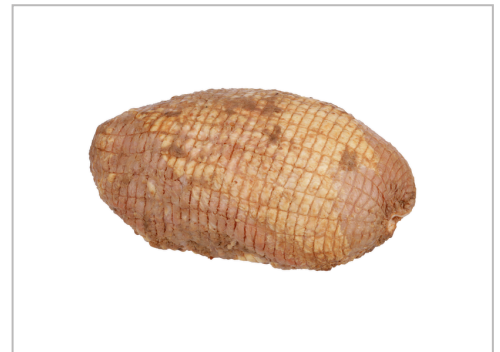
Calories	90
Protein	10 g
Total Carbohydrates	4 g
Sugars	3 g
Dietary Fiber	0 g
Lactose	
Sucrose	
Vitamin A (IU)	
Vitamin A (RE)	
Vitamin C	
Magnesium	
Monosodium	

Total Fat	3.5
Trans Fat	0 g
Saturated Fat	1 g
Added Sugars	3 g
Polyunsaturated Fat	0.5 g
Monounsaturated Fat	1.5 g
Cholesterol	30 mg
Vitamin D	0.2 mcg
Vitamin E	
Folate	
Vitamin B-6	
Sulphites	

Sodium	600 mg
Calcium	0 mg
Iron	0.5 mg
Potassium	350 mg
Zinc	
Phosphorus	
Thiamin	
Niacin	
Riboflavin	
Vitamin B-12	
Nitrates	

### NUTRITIONAL CLAIMS

### MORE IMAGES



Kretschmar

## - Kretschmar Premium Deli Honey Ham, Off the Bone, 2/9.5 lb, ...



Kretschmar® Ham offers a convenient sandwich filling that's already sliced and ready to eat so you can quickly add it to sandwiches or snacks. Real honey adds a rich sweetness to complement our off the bone deli ham, creating a taste the whole family can enjoy. Keep our honey cured ham in your refrigerator deli drawer to keep it fresh.

**MORE IMAGES**

