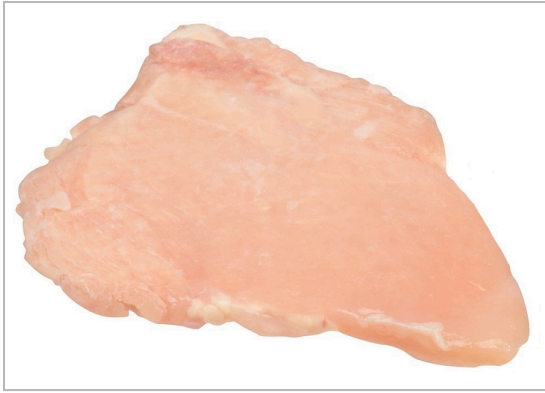


- Raw Boneless Skinless Chicken Breast Portions split IF ice ...

Our portion control is made using natural fall chicken breast that have been skillfully hand-deboned, gently marinated to enhance moisture and extend holding time. Computer sized, individually quick frozen and ice glazed to provide a quality start to any menu application.



MARKETING

Computer sized to help ensure portion size and cost.. Tumble marinated to enhance natural flavor, moisture and increase holding times.. Freezer to grill, individually quick frozen packed in a re-closable. No thawing required.

Nutrition Facts

48 Servings per container

Serving Size 100 gram

Amount Per Serving
Calories 99.14

% Daily Value*

Total Fat 2.5 g 4%

Saturated Fat 0.63 g %

Trans Fat 0.05 g

Cholesterol 55.65 mg %

Sodium 381.1 mg %

Total Carbohydrates 0 g %

Dietary Fiber 0 g %

Total Sugars 0 g

Includes 0 g Added Sugars %

Protein 19.42 g

Vitamin D 0.09 mcg %

Calcium 4.72 mg %

Iron 0.32 mg %

Potassium 321.88 mg %

* The % Daily Values (DV) tells you how much a nutrient in a serving of food contributes to a daily diet. 2,000 calories a day is used for general nutrition advice.

PRODUCT SPECIFICATIONS

Code	Dist Prod Code	GTIN	Calculated Pack			
390285	213250	00045421390286	48/8 OZ			
Brand	Brand Owner	GPC Description				
Koch Foods	Koch Foods Inc.	Chicken - Prepared/Processed				
Gross Weight	Net Weight	Case/Catch Weight	Country Of Origin	Kosher	Child Nutrition	
25.9 LBR	24 LBR	No	United States	Undeclared	No	
Shipping						
Length	Width	Height	Volume	TlxHI	Shelf Life	Storage Temp From/To
17 INH	13 INH	9.75 INH	1.25 FTQ	8x8	365 Days	-10 FAH / 10 FAH
Traceability Regulation						
Regulation Type Code	Regulatory Act	Trade Item Regulation Compliant	Regulation Restrictions and Descriptors			
TRACEABILITY_REGULATION	FSMA204	NOT_APPLICABLE	NOT_COVERED_BY_FTL			

HANDLING SUGGESTIONS

Store Frozen 10 degrees or below

ALLERGENS

C = 'Contains'; MC = 'May Contain'; N = 'Free From'; UN = 'Undeclared'; INI = 'Intentionally nor Inherently Included'; 50 = 'Derived from Ingredients'; 60 = 'Not Derived From Ingredients'; NI = 'No Info'

- Milk - NI
- Eggs - NI
- Soybean - NI
- Wheat - C
- Sesame - NI
- Peanuts - NI
- Tree - NI
- Fish - NI
- Shellfish - NI

INGREDIENTS

Boneless Skinless Chicken breast containing up to 15% of a solution of water, salt and sodium phosphates.

- Raw Boneless Skinless Chicken Breast Portions split IF ice ...

Our portion control is made using natural fall chicken breast that have been skillfully hand-deboned, gently marinated to enhance moisture and extend holding time. Computer sized, individually quick frozen and ice glazed to provide a quality start to any menu application.

PREPARATION & COOKING SUGGESTIONS

Flat Grill: 350 degrees - 5 to 6 min on each side;

SERVING SUGGESTIONS

Center-of-the-plate, sandwiches, salad topper. cut into strips for stir fry and skillet.

MORE INFORMATION

E-mail : info@kochfoods.com

NUTRITIONAL ANALYSIS

Calories	99.14
Protein	19.42 g
Total Carbohydrates	0 g
Sugars	0 g
Dietary Fiber	0 g
Lactose	
Sucrose	
Vitamin A (IU)	26.09 26.09 iu
Vitamin A (RE)	26.09
Vitamin C	1.04 mg
Magnesium	22.73 mg
Monosodium	

Total Fat	2.5 g
Trans Fat	0.05 g
Saturated Fat	0.63 g
Added Sugars	0 g
Polyunsaturated Fat	0.44 g
Monounsaturated Fat	0.83 g
Cholesterol	55.65 mg
Vitamin D	0.09 mcg
Vitamin E	
Folate	
Vitamin B-6	0.65 mg
Sulphites	

Sodium	381.1 mg
Calcium	4.72 mg
Iron	0.32 mg
Potassium	321.88 mg
Zinc	0.5 mg
Phosphorus	286.98 mg
Thiamin	0.06 mg
Niacin	9.07 mg
Riboflavin	0.09 mg
Vitamin B-12	0.17 mcg
Nitrates	

NUTRITIONAL CLAIMS